


 **BERTECH[®]**

**WE
MAKE
IT
SIMPLE**

FLEXSOL[®] DURAFast[®]



BERTECH®

WE DEVELOP AND MANUFACTURE CHEMICAL PRODUCTS FOR MAINTAINING, REPAIRING AND RECONDITIONING INDUSTRIAL EQUIPMENT.

WE OFFER

Innovative solutions with state-of-the-art technology that allow for quick and efficient repairs, helping our customers to increase their productivity.

OUR HISTORY

Since we started in Chile, in 2009, we have gained a significant market share and earned the trust of our customers. Currently, we have operations in Chile and Brazil, exporting to several countries in America, Africa, Asia, and Oceania, thanks to an efficient infrastructure and a team of dedicated and highly qualified professionals.

QUALITY-ASSURANCE POLICY

Our processes are based on a culture of total quality-assurance that guarantees safe and reliable products for our customers, employees, suppliers and the community.

FLEXSOL

BF-01

BF-02

BF-03



FLEXSOL® LINE

FAST CURING FLEXIBLE COATINGS FOR REPAIRING, PROTECTING AND RECONDITIONING INDUSTRIAL EQUIPMENT EXPOSED TO HIGH IMPACT AND ABRASION.

FAST

Resume operations in one hour.

SAFE

Easily-applied products, designed to guarantee the safety of workers.

SIMPLE

Easy to mix and handle by one person with the use of small tools included in each kit.

EXCELLENT PHYSICAL PROPERTIES

Excellent adhesion to rubber and metal. Flexibility and resistance to impact, abrasion and acidic environments.

DURAFAST

MX1

MX2



DURAFAST® LINE

FAST CURING RIGID COATINGS FOR REPAIRING, PROTECTING AND RECONDITIONING INDUSTRIAL EQUIPMENT EXPOSED TO HIGH ABRASION AND MODERATE IMPACT.

FAST

Resume operations in one hour or less using the accelerator additive.

SAFE

Easily-applied products, designed to guarantee the safety of workers.

SIMPLE

Easy to mix and handle by one person with the use of small tools included in each kit.

EXCELLENT PHYSICAL PROPERTIES

Excellent adhesion to metal, ceramic and concrete.



FLEXSOL®

BF-01



Liquid urethane elastomer designed for fast and long-lasting repairs of conveyor belts and rubber surfaces. Allows damage repair and recondition of parts and equipment exposed to impact, abrasion, vibration, and expansion/contraction.

MAIN USES

From heavy-duty conveyor belts, such as belt feeders, to light-duty production conveyor belts, as well as elbows and manufacturing of molded parts, among other applications involving rubber.

FEATURES

- > Excellent adhesion to rubber.
- > Liquid consistency.
- > Applied on horizontal surfaces.

KIT INCLUDES

- > Resin.
 - > Cleaning solvent.
 - > Primer.
 - > Catalyst.
- *All the necessary components for mixing and applying the product.



Before Flexsol BF-01



after Flexsol BF-01



FLEXSOL® BF-02

Liquid urethane elastomer for horizontal application, designed for rapid repair, rebuilding, and protection of equipment subject to abrasion, impact, vibration, and expansion/contraction on metal and rubber surfaces.



MAIN USES ON METAL

Repairing, maintaining and reconditioning steel cable conveyors (cable belts). Coating drums, tanks, chutes, mills, parts exposed to acidic environments, pumps, and maintaining or replacing coatings on various metals.

MAIN USES ON RUBBER

Repairing and reconditioning conveyor belts, rubber parts and elbows. Repairing and coating parts exposed to acidic environments. Manufacturing molded parts or replacing rubber coatings.

FEATURES

- > Excellent adhesion to metal and rubber materials.
- > Applied on horizontal surfaces.
- > Can be used simultaneously on metal and rubber surfaces.

KIT INCLUDES

- > Resin.
 - > Cleaning solvent.
 - > Rubber primer.
 - > Metal primer.
 - > Catalyst.
- *All the necessary components for mixing and applying the product.



Before Flexsol BF-02



After Flexsol BF-02



FLEXSOL®

BF-03



Liquid urethane elastomer of putty consistency for horizontal and vertical application, designed for repairing, rebuilding and protection of equipment subject to abrasion, impact, vibration, and expansion/contraction on metal and rubber surfaces.

MAIN USES

Reconditioning and maintaining drum liners. Maintaining and coating hydrocyclones, tanks and elbows. Maintaining or replacing different metal and rubber coatings, etc.

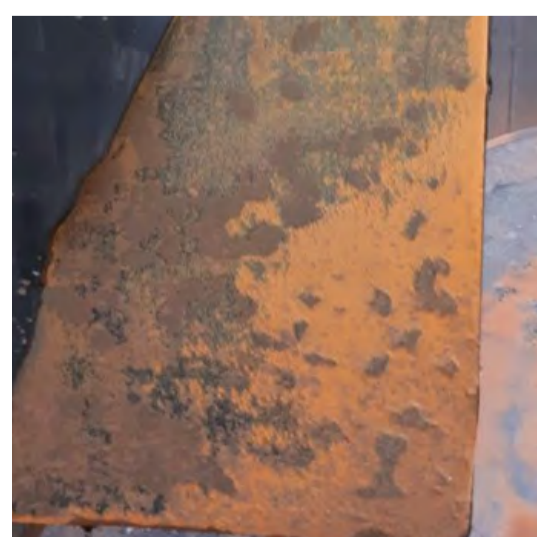
Repairing and reconditioning steel cable conveyors (cable belts). Manufacturing molded parts. Filling cracks to avoid material accumulation, etc.

FEATURES

- > Excellent adhesion to metal and rubber materials.
- > Applied on horizontal and vertical surfaces.
- > Can be used simultaneously on metal and rubber surfaces.

KIT INCLUDES

- > Resin.
- > Cleaning solvent.
- > Rubber primer.
- > Metal primer.
- > Catalyst.
- *All the necessary components for mixing and applying the product.



Before Flexsol BF-03



After Flexsol BF-03



DURAFAST® MX1



Two-component epoxy compound in a 1:1 ratio for repairing and protecting equipment and parts exposed to wear due to abrasion, impact and vibration caused by coarse particles. Contains 3 mm aluminum oxide ceramic spheres.

MAIN USES

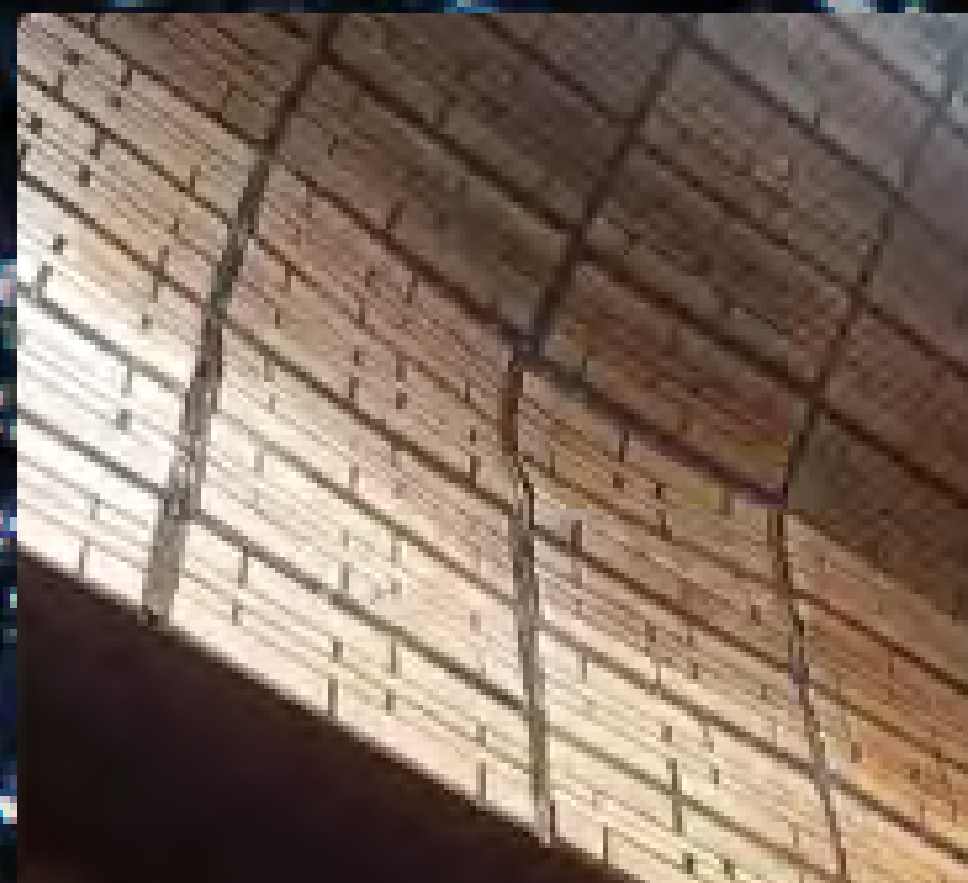
Repairing and protecting chutes, pump casings, dust collectors, chippers, protecting pipe elbows, extractors, sieves, mills, trommel screens, fans, crushers, and grinders.

FEATURES

Fast curing (60 minutes) at 25 °C (77 °F). Excellent adhesion to steel, ceramic and concrete. Thixotropic product, does not run or drip when applied on vertical or overhead surfaces. Allows resuming operations in only 1 hour.

Available in three formats: 2 kg, 5 kg, and 10 kg.

Each Durafast MX1 kit includes resin, hardener, solvent, and all the necessary components for mixing and applying the product.



Before Durafast MX1



After Durafast MX1



DURAFAST® MX2



Two-component epoxy compound in a 1:1 ratio for repairing and protecting equipment and parts exposed to wear due to abrasion, impact and vibration caused by fine particles. Contains 1mm aluminum oxide ceramic spheres that allow repairing small holes in metal surfaces with a smooth finish.

MAIN USES

Repair and protection of pump casings, protection of mill discharge, pneumatic conveyors, screw conveyors, wear plates, pulverizers, dust collectors, chippers, pipe elbow protection, cyclones and hoppers.

FEATURES

Fast curing (60 minutes) at 25 °C (77 °F). Excellent adhesion to steel, ceramic and concrete. Thixotropic product, does not run or drip when applied on vertical or overhead surfaces. Allows resuming operations in only 1 hour.

Available in three formats: 2 kg, 5 kg, and 10 kg.

Each Durafast MX2 kit includes resin, hardener, solvent, and all the necessary components for mixing and applying the product.



Before Durafast MX2



After Durafast MX2

WE ARE GLOBAL

We are a global company with headquarters, manufacture and research facilities in Chile and a branch in Brazil.

Our products are marketed through a network of official distributors in different key points around the world.



BERTECH®

WE MAKE IT SIMPLE

BERTECH CHILE Volcán Láscar Oriente 781, Pudahuel, Santiago
+56 2 2246 3485

BERTECH BRASIL Av Montreal 219, Lojas 17 e 18, Jardim Canadá - Nova Lima, MG,
CEP: 34.007-720



www.bertech.cl